

Kaluga region

Kaluga region



**KALUGA
REGION**

Start your business
in Kaluga Region



МАНУФАКТУРЫ BOSCO®



Palladio Zannini
Industrie Grafiche Cartotecniche S.p.A.

БИОТЕХПРОСВА

BERLIN-CHEMIE
MENARINI GROUP

ORAC
DECOR



TOTAL

Galenika

Гранс
Онтеинер

GREIF



АГРОИНВЕСТ

ela[container]

san marco
SISTEMI VERNICIANTI PER L'EDILIZIA



ARKHBUM
TISSUE GROUP

novo nordisk®

mitsubishi

CITROËN

HT&L

РЕКАСТ

МЕТАЛЛИСТ



Continental

KARELIA UPOFLOOR

L'ORÉAL



Р/О

НЛМК

PURINA

JOHN DEERE



AstraZeneca

MAGNA
EXTERIORS & INTERIORS

grand laitier
Гран Латье



POCATOM

PEUGEOT

FlintGroup
Flexographic Products

wolf
SYSTEM

Gonvarri

kraftway

НИАРМЕДИК



STADA

LafargeHolcim

GEFCO

СИБУР

GRIMME
HARVESTING SUCCESS!

ABInBev/EFES

Hemofarm

РЕФКУЛ

ЭКОНИВА

SAMSUNG

Severstal

tecleor

D.A. RUS



GABRIEL-CHEMIE
GROUP

LAMINAM

FUCHS

BENTELER
Automotive

OKVA

KIILTO

STORAENSO

HP

SCHERDEL

LEMKEN

LOTTE



faurecia

ŠKODA

Linde

Big Dutchman

VENTALL

mirpharm

GILETTA
a BUCHER company

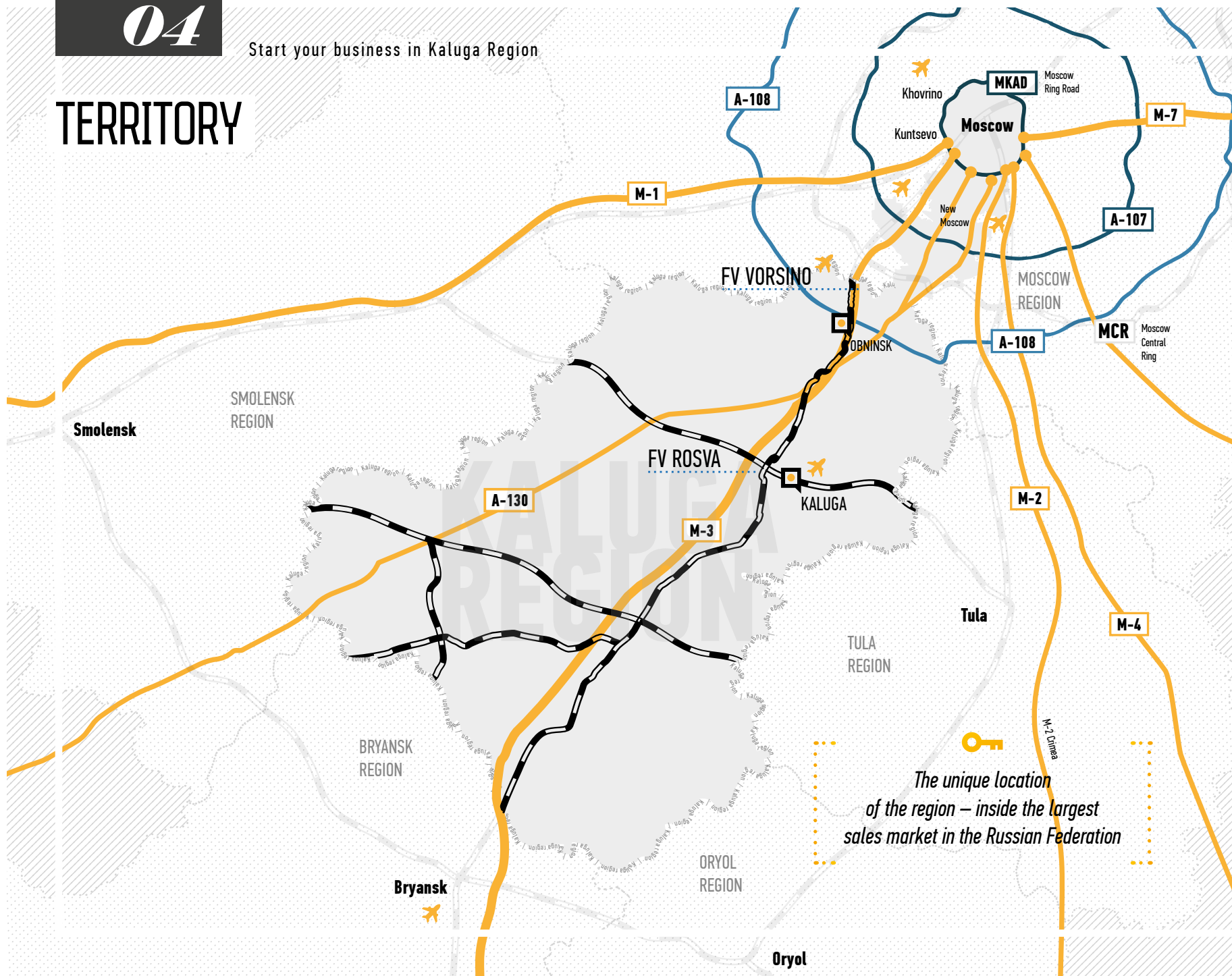
Sanatmetal
Manufacturer of Orthopedic and Traumatologic Products

BUCHER
municipal

IronsramTHRani
RANI PLASTRESHNASTILLABORATOIRE
NATURELHAYATSTEEL PAINTРСТ
РУССКИЕ
ГАЗОВЫЕ
ТУРБИНЫKT&GМИРАТОР
СТРОИТЕЛЬНЫЕ МАШИНЫИНТЕР
РАОЕССMETROAwahFreight VillageCELLINO GROUPLEAER
CORPORATIONRENAULTСфера·ФармMAHLE
ORIGINALSMRCX5RETAILGROUPКАЛУЖСКИЙ
ГАЗОБЕТОНМЕРКАТОРLa Lorraine
BAKERY GROUP

KALUGA REGION is a comfortable region for living and doing business. The region is a leader in terms of industrial production growth rates, the level of implemented technologies and the quality of life. The region occupies a leading position in the National rating of the state of the investment climate. More than 250 projects from different countries and regions are being implemented in the region. Favorable geographical position, developed transport and logistics complex, a wide range of sites for production facilities, tax incentives make the region attractive for the development of any business.

TERRITORY



20,000,000

consumers within 180-km radius

165 KM

distance from
Kaluga to Moscow

68 KM

distance from the border
of Kaluga Region to Moscow



Main cities



Airports



Main roads



Federal highways



Railroads

KALUGA REGION

Status:

Constituent entity of the Russian Federation,
part of the Central Federal District

Area

Population

29,800 km²

1,012,844

Major cities:

Kaluga

Obninsk

335,599

121,508

Municipal
structure:
304 municipalities,
24 districts

Environmental index:

8th
place among
85 regions

Natural resources:
584 – solid mineral deposits
424 – construction materials
76 – agro technical materials
45.1% of the territory – woods

06

Start your business in Kaluga Region

INVESTMENTS

RUB 1.3 TRLN

investments
attracted to the region
(since 2006)





>250

investment
projects
implemented

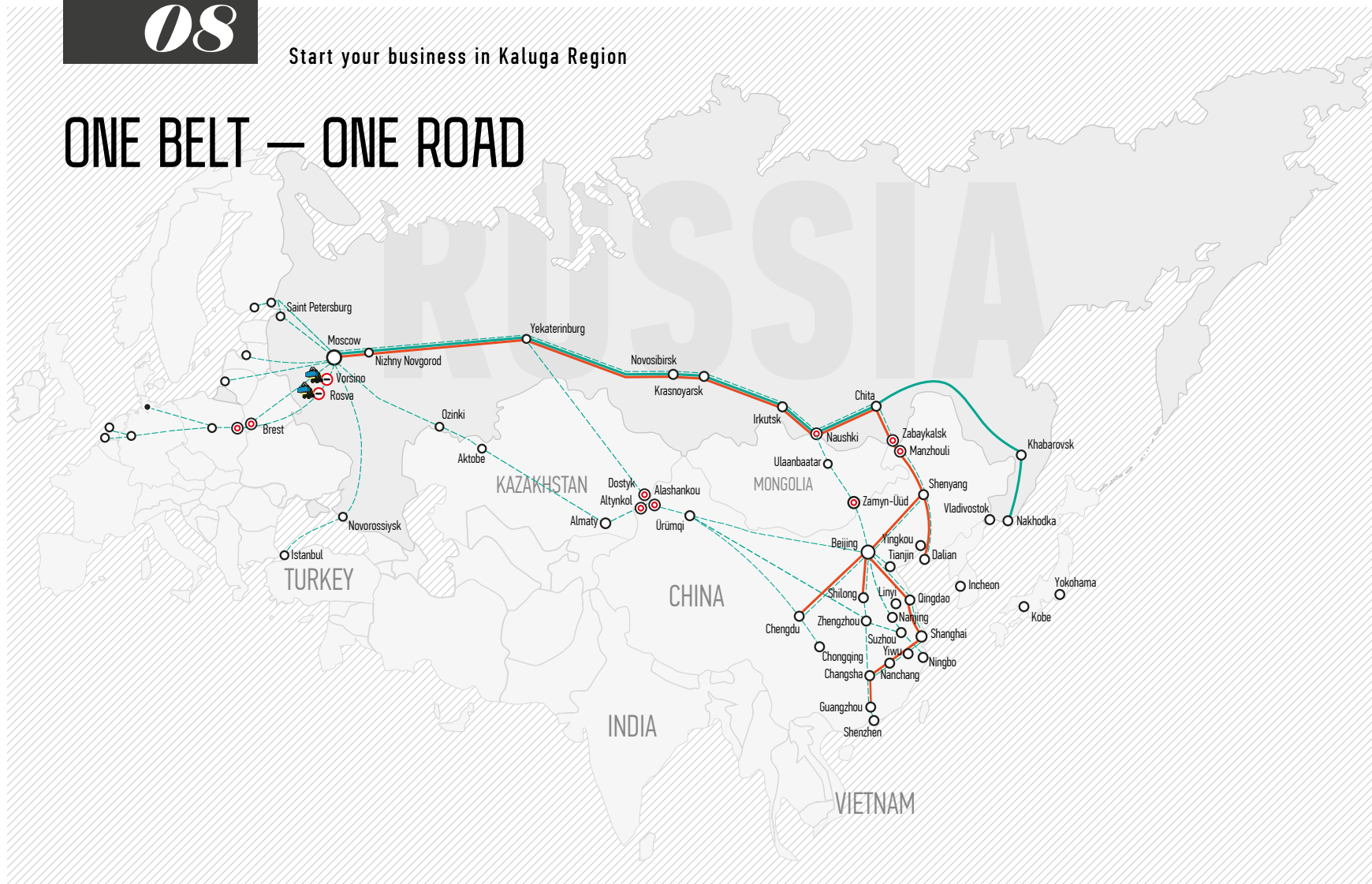
>120

major industrial production
facilities commissioned
since 2006

>200

contracts
in investment
portfolio

ONE BELT — ONE ROAD



KALUGA REGION IS A PARTICIPANT OF ONE BELT — ONE ROAD, AN INTERNATIONAL PROJECT

- 2022 — Optimization of terms and cost of cargo delivery
- 2020 — 20 largest cargo consolidation points in China, ports of Turkey, Mongolia, Kazakhstan, Republic of Belarus, etc.
- 2020 — launch of the project to create the Russian Post megahub

- 2022 — the first container train Russia was sent from the Freight Village Vorsino terminal along the Vladivostok-Moscow-Vladivostok route. New services and technologies allowed cities along the Trans-Siberian Railway to join the project: Khabarovsk, Irkutsk, Krasnoyarsk, Novosibirsk, Omsk, Tyumen, Yekaterinburg and Kazan

LOGISTICS RESOURCES

Freight Village Vorsino

Freight Village Vorsino — the largest distribution hub in the center of Russia

67 KM — MKAD
20 km — New Moscow

570 HA — total area

350,000
TEUs/year —
capacity of the container
terminal

Customs terminal / container
terminal / universal railway terminal
/ storage complexes / multi-function
industrial facilities / office and service
infrastructure

Freight Village Rosva

Freight Village Rosva — interregional hub

190 KM — MKAD
20 km — center of Kaluga

62,8 HA — total area

150,000
TEUs/year —
capacity of the container
terminal

Truck terminal /
container terminal /
railway terminal /
customs post /
excise post

Kaluga International Airport

8 KM — from the center
of Kaluga

200 ha —
area of the airport complex
2,200x45 m —
dimensions of the runway

2nd class —
takeoff weight of inbound aircrafts
100 passengers/hour —
throughput capacity

TAKEOFF AND LANDING
OF VARIOUS TYPES
OF AIRPLANES,
INCLUDING A319,
B737 AND
SIMILAR (64 T)

10

Start your business in Kaluga Region

INDUSTRY



~ 3,000
industrial enterprises

> 43,000
SMEs



MADE IN KALUGA REGION

Cars
and trucks

Steam and gas
turbines, engines

Pharmaceutical
products

Railway equipment
and locomotives

Satellite
equipment

Food
products

Diagnostic
equipment

Construction
materials

Woodwork
and furniture

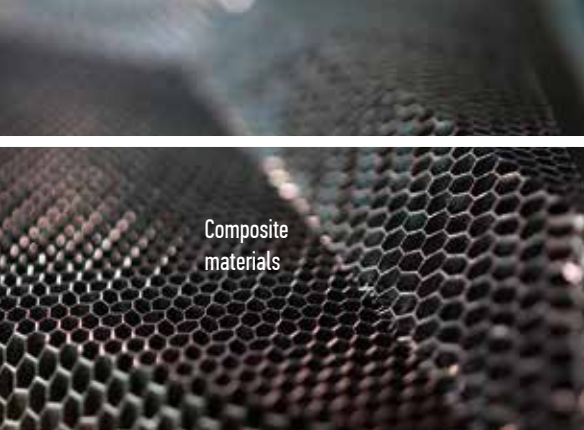
Medical
goods

Computers
and optical
goods

TV sets and
home appliances

Radioelectronic
equipment

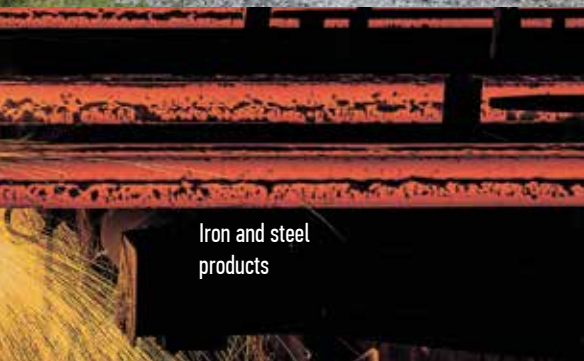




Composite materials



Packing materials, paper, cardboard



Iron and steel products



TV sets and home appliances



STATE SUPPORT FOR INDUSTRY:

Special
investment
contract

Industrial
Development
Fund

Government
programs
of the RF

Regional
investment
project



*Economic diversification
and cluster policy make it
possible to develop
any business*

CLUSTERS



*The industrial policy
of the region is based on the cluster
principle of development.
More than 10 clusters
are actively developing.*



TRANSPORTATION AND LOGISTICS CLUSTER

- Freight Village Vorsino — the largest distribution hub in the center of Russia
- Freight Village Rosva — interregional hub
- Kaluga International Airport



AUTOMOTIVE AND AUTOMOTIVE COMPONENTS CLUSTER

- 30 companies manufacturing auto components
- 3-OEM manufacturer
- wide opportunities for cooperation



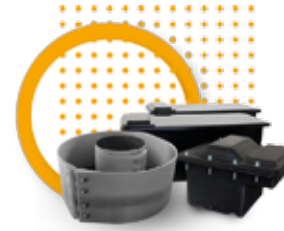
AGRO-INDUSTRIAL CLUSTER

- Russian leader in terms of growth in milk production
- 750 peasant farms, 150 robotic farms
- 45 enterprises of the food and processing industry



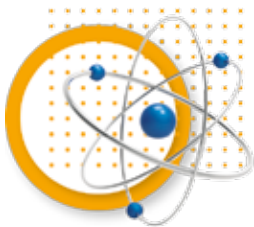
PHARMACEUTICAL, BIOTECHNOLOGY AND BIOMEDICINE CLUSTER

- 70 participants
- 170 types of medicines
- 80% of products are innovative medicines



CLUSTER OF COMPOSITE AND CERAMIC TECHNOLOGIES

- 22 participants
- 11 partner enterprises
- >1000 innovative developments



NUCLEAR TECHNOLOGY CLUSTER

- 3 state scientific centers
- Obninsk — the first science city in Russia
- promising projects for industry



CLUSTER OF INFORMATION AND COMMUNICATIONS TECHNOLOGIES

- 140 participants
- educational projects
- promising developments



METALWORKING CLUSTER

- >10 enterprises-participants
- NLMK, VMK Invest — leading companies in the industry
- high environmental standards



EDUCATION CLUSTER

- 100% training for the needs of the economy
- dual education system
- program «Professionalism»



TOURISM AND RECREATION CLUSTER

- 4000 monuments of history and culture
- 130 unique tour routes
- 20 tour operators of domestic tourism



BUILDING MATERIALS PRODUCTION CLUSTER

- TOP-10 regions of the Russian Federation in terms of housing commissioning
- the largest enterprises in the industry: Lafarge Holsim, AKKERMANN CEMENT, Siberian Element Renta-K

GLOBAL KPI

TECHNOLOGIYA ORPE

>200

composite products are manufactured
for the Russian aerospace industry

58

spacecraft equipped with
Technologiya composite components
have been launched into orbit

1,800

thermal regulation panels
have been manufactured
for spacecraft



a frameless body for EgyptSat-A satellite
(operated by Egypt National Agency for Earth Remote
Probing) has been designed and manufactured.



KALUGA TURBINE PLANT

— a turbine generator set for Gross coal power station
has been manufactured. It will be operated in extreme
climate conditions of Southern Yakutia.

>3,000

pieces of electric power equipment
have been produced for customers
(50% for Russia, 50% for 42 former USSR
and other countries)



NIARMEDIC

Niarmedic pharmaceutical company produces unique agents for human genetic identification and DNA kinship testing.

The list of key customers for DNA analysis sets includes the Ministry of Interior of the Russian Federation, the Committee for Investigations of the Russian Federation, the Ministry of Healthcare of the Russian Federation (forensic laboratories), the Federal Security Service of the Russian Federation, the Ministry of Defense of the Russian Federation.

MERCATOR

Mercator's share in the market of municipal equipment exceeds 40%.

The company's products are in great demand in 73 regions of Russia, from Kaliningrad to Kamchatka.

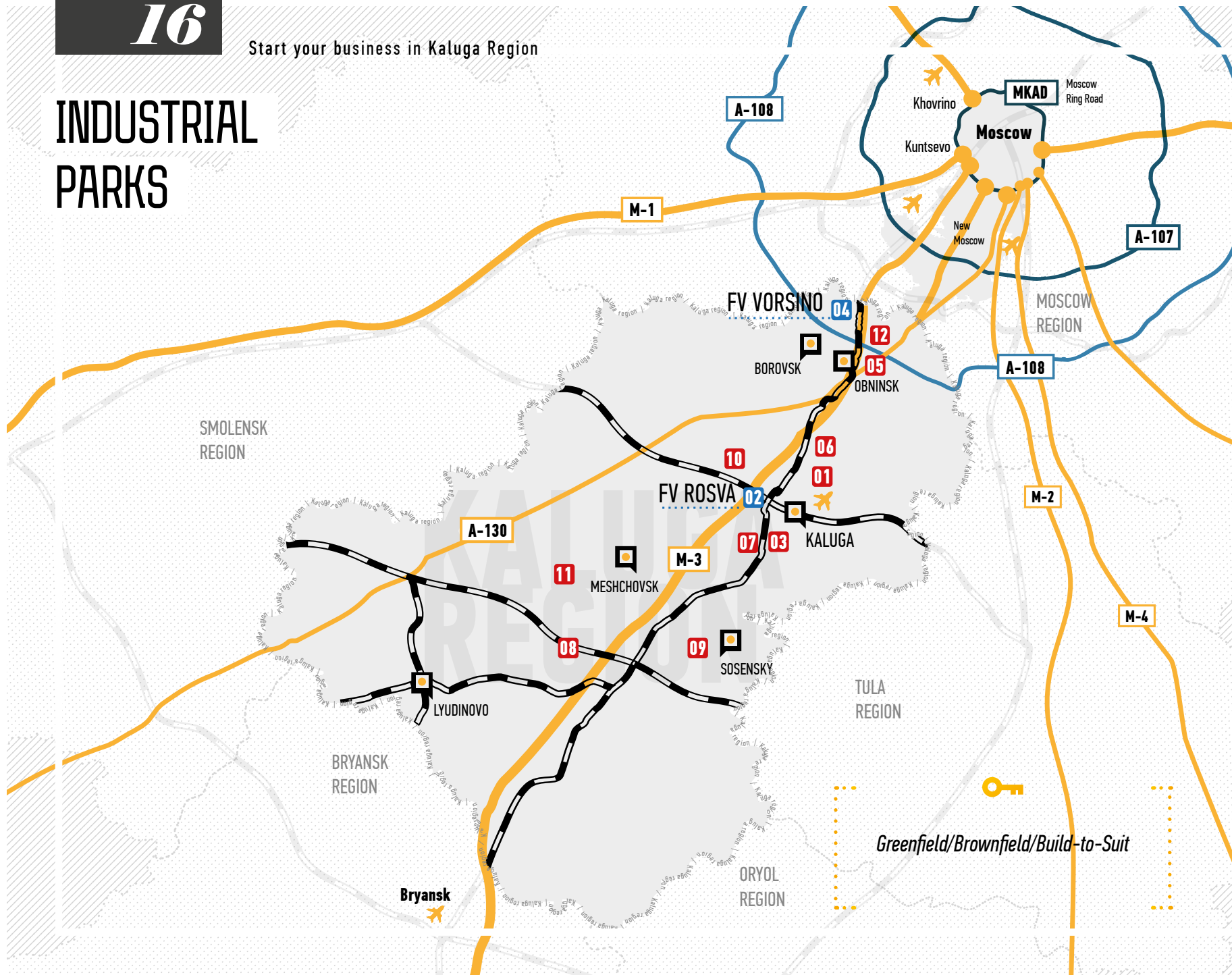


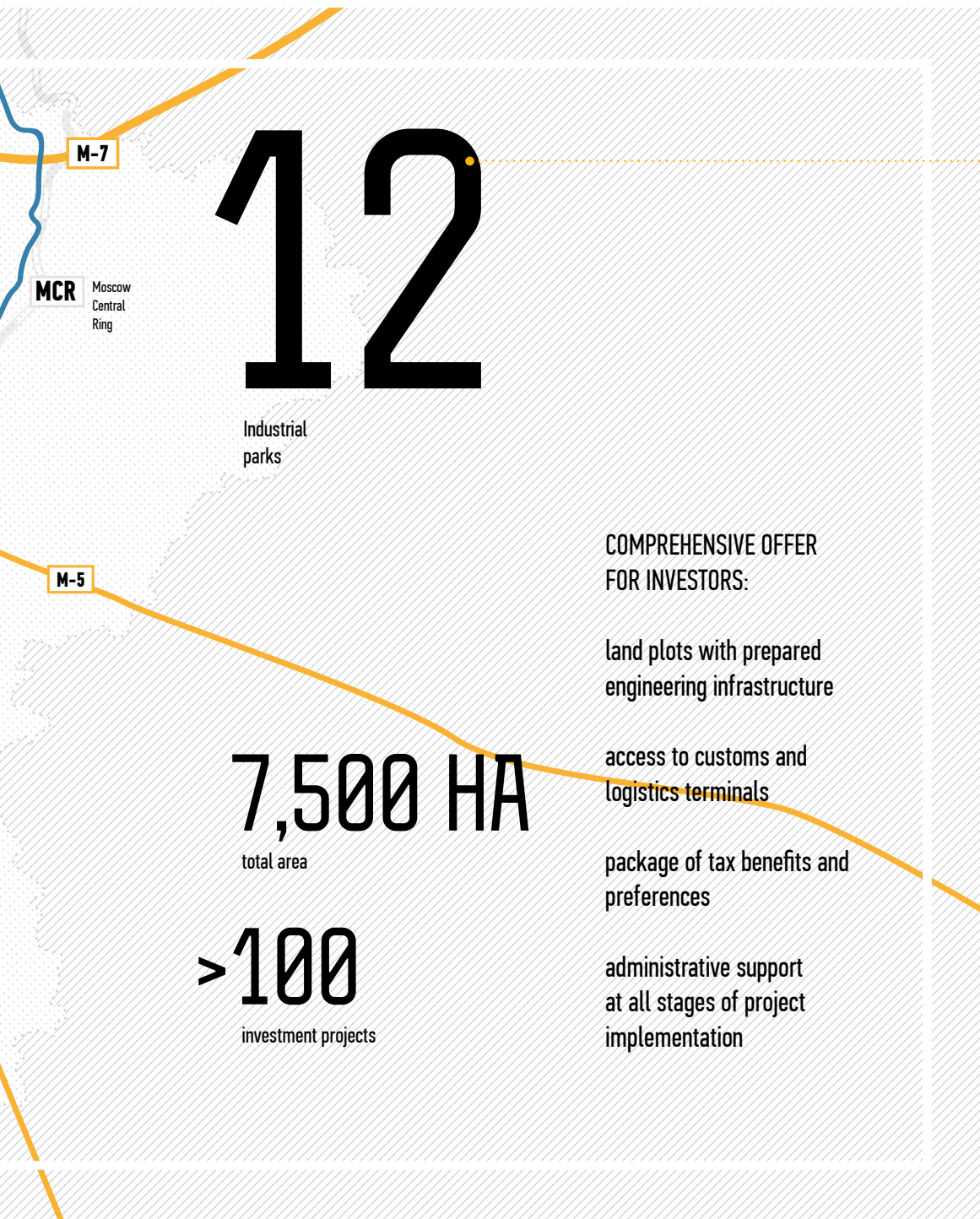
SOBOL

- a Russian leading manufacturer of sports equipment
- the company's share in the entire global ski manufacturing volume is about 70%



INDUSTRIAL PARKS





PRIORITY SOCIAL AND ECONOMIC DEVELOPMENT AREAS (PSEDA_s)

**Territories with special legal status for business offering a number of tax benefits and administrative preferences for investors*

SOSENSKY SINGLE-INDUSTRY TOWN

PSEDA status obtained on November 13, 2017

240 KM
to Moscow

90 KM
to Kaluga

22 HA

for production facilities placement

10,628
population

6,367
working-age population



Minimum volume of capital investments - RUB 2.5 million
**within the first year following the inclusion in PSEDA residents registry*

SUPPORT: FEDERAL DEVELOPMENT FUNDS

BACKBONE ENTERPRISE

Sosensky instrument-making plant (branch of FSUE Scientific-Production Center of Automatics and Instrument-Making named after academician Pilyugin)



ADVANTAGES:

Highly qualified staff
in radioelectronics

Environmentally clean town
Industrial park

0%

property tax for 5 years
(next five years: the tax rate of 1.1-1.5%)

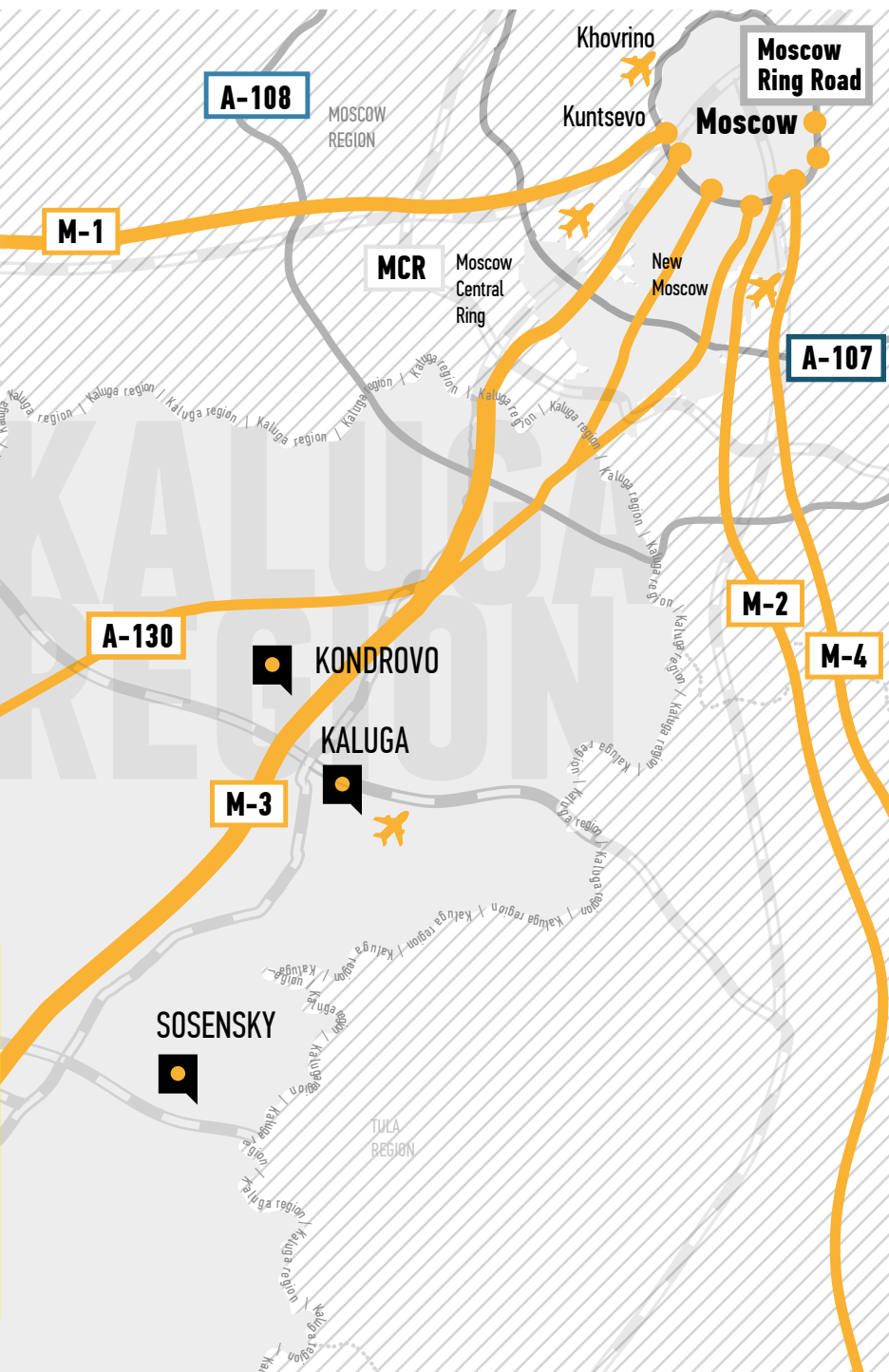
land tax for the PSEDA
effective term

corporate income tax for 5 years
(next five years: the tax rate of 12%)

7.6%

INSURANCE
PAYMENTS

Pension Fund – 6%
Social Security Fund – 1.5%
Compulsory Medical
Insurance Fund – 0.1%



KONDROVO SINGLE-INDUSTRY TOWN

PSEDA status obtained on November 21, 2020

31.4 HA

for production facilities placement

14,857

population

9,238

working-age population

160 KM

to Moscow

47 KM

to Kaluga

BACKBONE ENTERPRISES:

Troitsk Paper Mill, Kondrovo Paper Company,
Vesta Firm, Kondrovo Branch of GeoPAK



ADVANTAGES

- Diversified industry in the district
- Convenient logistics

- Opportunity to develop cultural and event tourism

20

Start your business in Kaluga Region

SPECIAL ECONOMIC ZONE KALUGA

of Industrial
and Production Type

customs duties
land tax for 5 years
property tax for 10 years
VAT

0%

0–13.5% — regional share of corporate income tax
(depending on business area)

Total area of SEZ

994.2 HA

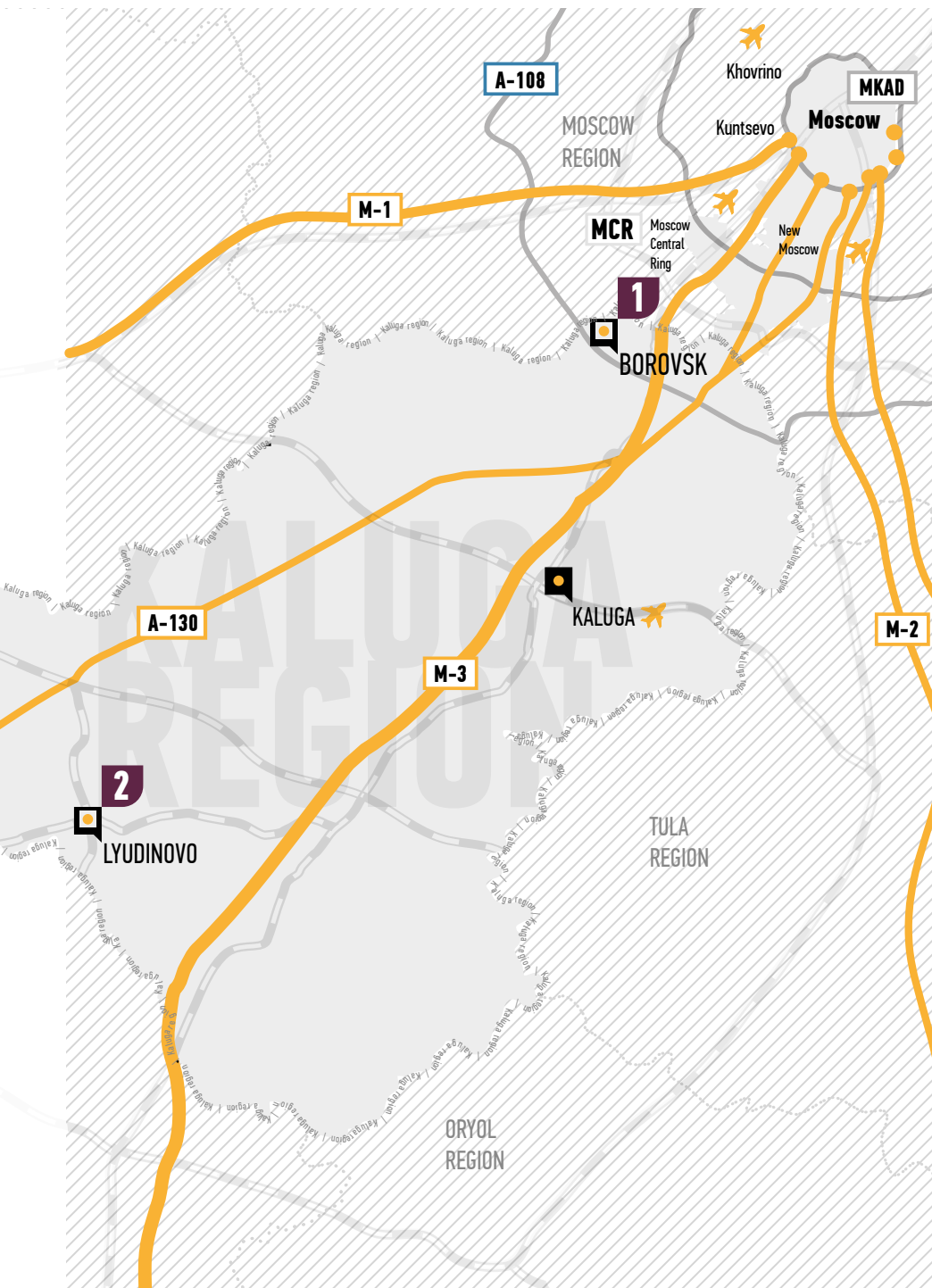
Cost reduction for SEZ
residents

30%

SMOLENSK
REGION

Kaluga region
Tula region
Moscow region
Yaroslavl region
Vladimir region
Ivanovo region
Kostroma region
Nizhny Novgorod region
Ryazan region
Tver region
Magadan region
Chukotka region
Nenets Autonomous Okrug
Khanty-Mansi Autonomous Okrug
Yamalo-Nenets Autonomous Okrug

RYAZANSK
REGION



BOROVSK SITE

1 S 369.2 HA

Unique logistics location at the border with New Moscow

Access to highly qualified staff

95 KM
to Kaluga

80 KM
to Moscow

LYUDINOVO SITE

2 S 625 HA

Available engineering infrastructure

Provision of land plots adjacent to railway

80 KM
to Bryansk

160 KM
to Kaluga

320 KM
to Moscow

MAIN TAX BENEFITS FOR INVESTORS IN KALUGA REGION

INCOME TAX

BENEFIT RECIPIENT CATEGORY	MINIMUM VOLUME OF INVESTMENTS	TAX RATE	BENEFITS DURATION
Registry of Investment Projects	RUB 100 mln within 3 years	2% (3% till 2024) – Federal budget 13.5% – Regional budget (up to 2022 incl.)	Up to 4 years
Regional Investment Project	RUB 50 mln within 3 years, or RUB 500 mln within 5 years	0% – Federal budget 13.5% – Regional budget	No more than 100% of total amount of capital investments, till 2028
Special Economic Zone (SEZ)	RUB 20 mln (including RUB 40 mln within 3 years)	2% – Federal budget 0 – 13.5% – Regional budget	Till 2062
Priority Social and Economic Development Area (PSEDA)	RUB 2.5 mln within the first year	0% – Federal budget 0% – Regional budget 2% (3% till 2024) – Federal budget 10% – Regional budget	5 after receipt of the first income Subsequent 5 years
Special Investment Contract (SPIC 2.0)	No specific required amount, Precondition: development and/or introduction of an advanced technology	0% – Federal budget 13.5% – Regional budget	Less than RUB 50 bln – no more than 15 years, More than RUB 50 bln – no more than 20 years, And no more than 50% of total amount of capital investments

PROPERTY TAX

BENEFIT RECIPIENT CATEGORY	MINIMUM VOLUME OF INVESTMENTS	TAX RATE	BENEFITS DURATION
Registry of Investment Projects, Regional Investment Project, Special Investment Contract (SPIC 2.0)	From RUB 100 mln within 3 years	0%	Up to 3 years
Special Economic Zone (SEZ)	RUB 120 mln (including RUB 40 mln within 3 years)	0%	10 years
Priority Social and Economic Development Area (PSEDA)	RUB 2.5 mln within the first year	0%	5 years

LAND TAX

Special Economic Zone (SEZ)	RUB 120 mln (including RUB 40 mln within 3 years)	0%	5 years
Priority Social and Economic Development Area (PSEDA)	RUB 2.5 mln within the first year	0%	Throughout the period of PSEDA existence

TRANSPORT TAX

Special Economic Zone (SEZ)	RUB 120 mln (including RUB 40 mln within 3 years)	0% – for trucks and other self-propelled tracked or rubber-tired vehicles, machinery and equipment	10 years
-----------------------------	--	--	----------

SOCIAL FUNDS

Priority Social and Economic Development Area (PSEDA)	RUB 2.5 mln within the first year	7.6%	10 years
---	-----------------------------------	------	----------

EDUCATION AND STAFF

> 30,000
specialists trained

TRAINING CENTER
FOR AUTOMOTIVE
INDUSTRY

VOCATIONAL
TRAINING

Areas: transport vehicles, IT, machine-building, energy sector,
architecture and construction, agriculture

INNOVATIVE CENTER
FOR CONSUMER
INDUSTRY

Specialists
training
and internship

Organization
of WorldSkill
international competition

Equipment and training
documentation meeting
international standards

300 people
study
at a time


**100% focus on
the needs of labor market**



2022 —
KALUGA REGION BECAME
A MEMBER OF THE
FEDERAL PROJECT
«PROFESSIONALITY»

— training of vocational education
personnel for the needs of the market

— Kaluga Technical College —
TOP-70 best colleges in Russia

— project partners —
the largest enterprises
in the region: KTZ,
Kalugaputmash, KADVI,
Remputmash, Ventall, LTZ

TRAINING CENTER FOR PHARMACEUTICAL INDUSTRY



01

Dual education principle —
theory + practical training

02

Technical and training base meeting
international standards

03

GMP-training for specialists
with different degree of training

MAJOR HIGHER EDUCATION INSTITUTIONS



Obninsk Institute for Nuclear Power Engineering —
branch of the National Research Nuclear University
MEPhI

- chair of pharmaceuticals and radio-pharmaceutical chemistry
- chair of radionuclide medicine
- unique training programs for specialists in pharmaceutical industry



Kaluga Branch of Bauman
Moscow State Technical University

- training of engineering staff (10 areas and 16 professions)
- 200 modern training and scientific laboratories
- practical training in machine-building, instrument-building and electronics enterprises
- university educational campus



Tsiolkovsky Kaluga State University

- 8 institutes and 2 faculties
- new training profiles: analytical chemistry, pharmaceutical chemistry
- practical training at Russian and foreign plants

ONE-STOP-SHOP CONCEPT

AGENCY FOR REGIONAL DEVELOPMENT OF KALUGA REGION



Searching for and attracting investors and providing support for investment projects (at all stages of their implementation)

AGENCY FOR BUSINESS DEVELOPMENT



State support for small and medium business

AGENCY FOR INNOVATIVE DEVELOPMENT



Development of innovative clusters

AGENCY FOR TOURISM DEVELOPMENT



Development of the tourism industry

MINISTRY FOR ECONOMIC DEVELOPMENT OF KALUGA REGION



www.admoblkaluga.ru/sub/econom/

CENTER OF PUBLIC PRIVATE PARTNERSHIP



PPP projects in tourism, education and other socially significant areas

KALUGA REGION DEVELOPMENT CORPORATION



Development of infrastructure of industrial parks

KALUGA SEZ



Development of SEZ territories: engineering and logistics infrastructure

REPRESENTATIVE OFFICE OF THE KALUGA REGION GOVERNMENT UNDER THE GOVERNMENT OF THE RUSSIAN FEDERATION



Development of economic cooperation at the federal and international levels

INVESTMENT PORTAL

KALUGA REGION | INVESTKALUGA.COM



- Accompanying investment projects
- **Online production placement application**
- Government support measures
- Industrial sites
- 8 languages



HORIZON INTERACTIVE AWARDS
golden winner in the nomination
Government Agency



TOURISM BRANDS OF THE REGION

ETHNOMIR — THE LARGEST
ETHNOGRAPHIC PARK IN RUSSIA

TOP 10

Russian Regions in tourism development rate

>4,000

historical and cultural
monuments

130

unique routes

50

museums

OPTINA PUSTYN MONASTERY

The most important religious
and spiritual center

>20

major
festivals

BUZEON

First Russian interactive
paper museum



VOROBYI
BIRD PARK

>200
bird species

First bird park
in Russia

Ornithology science
and research center



UGRA NATIONAL PARK —
UNESCO biosphere reserve

90,000 HA
area

500
eco trails

300
cultural
heritage sites



TSIOLKOVSKY STATE
MUSEUM OF THE HISTORY
OF COSMONAUTICS

Russia's largest
collection of space
exhibits



NIKOLA-LENIVETS
ART-PARK

31
objects of land-art

650 HA
— total area

Festivals: Archstoyanie,
New Media Nights



MU-MU,
GARBAGE ART MUSEUM

>200 art
works

30

Start your business in Kaluga Region

HOSPITALITY INFRASTRUCTURE

188 hotels in Kaluga
and Kaluga
Region



Four Points by Sheraton Kaluga has become the best hotel among 272 hotels of Four Points by Sheraton chain in the world, and the best Marriott hotel in Europe.



FITNESS
CENTERS



Wake Park VOclub
SKI-RIXEN winch

All equipment necessary
for wakeboarding



KWAN SKI RESORT

SK Royal Hotel
Kaluga



KALUGA
INTERNATIONAL AIRPORT

B-Class

500,000
passengers per year –
throughout capacity

Infrastructure
for business aviation:
parking lot, storage,
maintenance



Hotel
of the Year
Award



Welna Eco Spa Resort Tourist Complex
Eco-complex Yukhnovgrad



First National Award
'Russian Hospitality Awards'
100 best hotels in Russia



INNOVATIVE
CULTURAL CENTER

4,000 M²
of creative space



31



Kaluga Region
Investment Portal

investkaluga.com



Agency for Regional Development
of Kaluga Region

41 Dzerzhinskogo St., bld 2, Kaluga, 248001

arrko.ru

Director General
Nikolai ANDREEV
+7 (910) 860-32-79